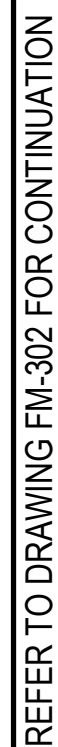
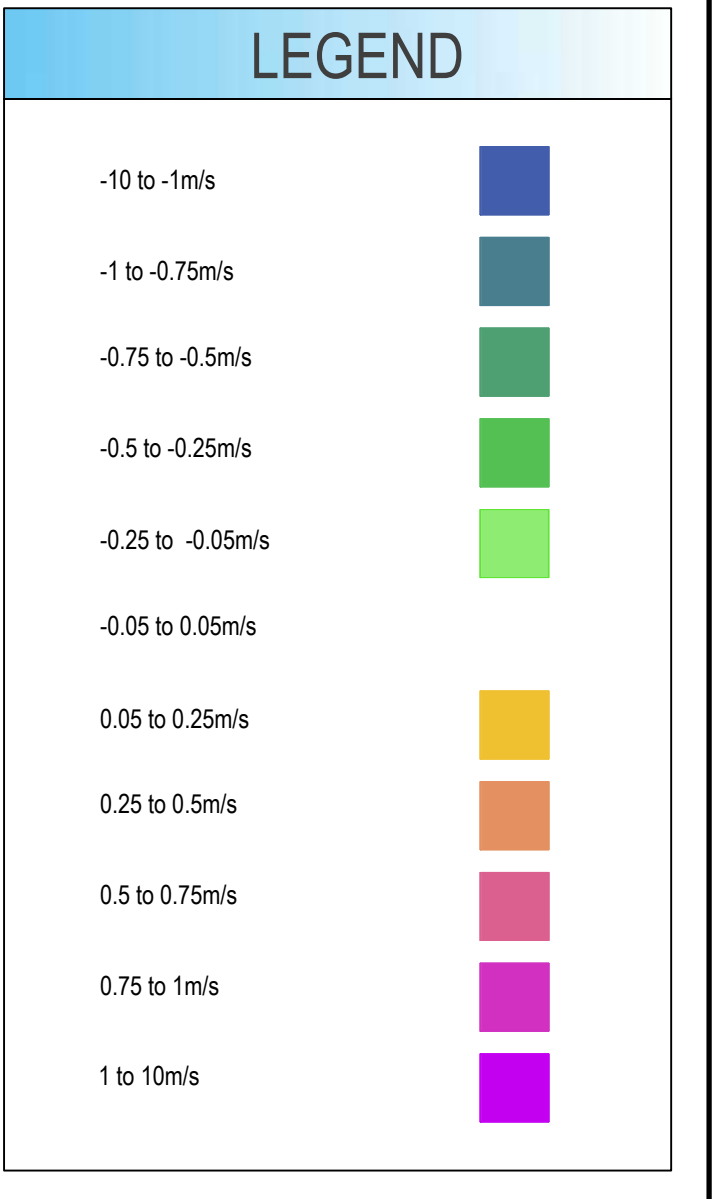
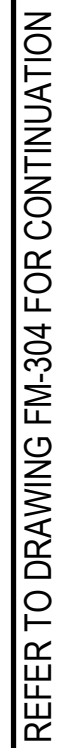
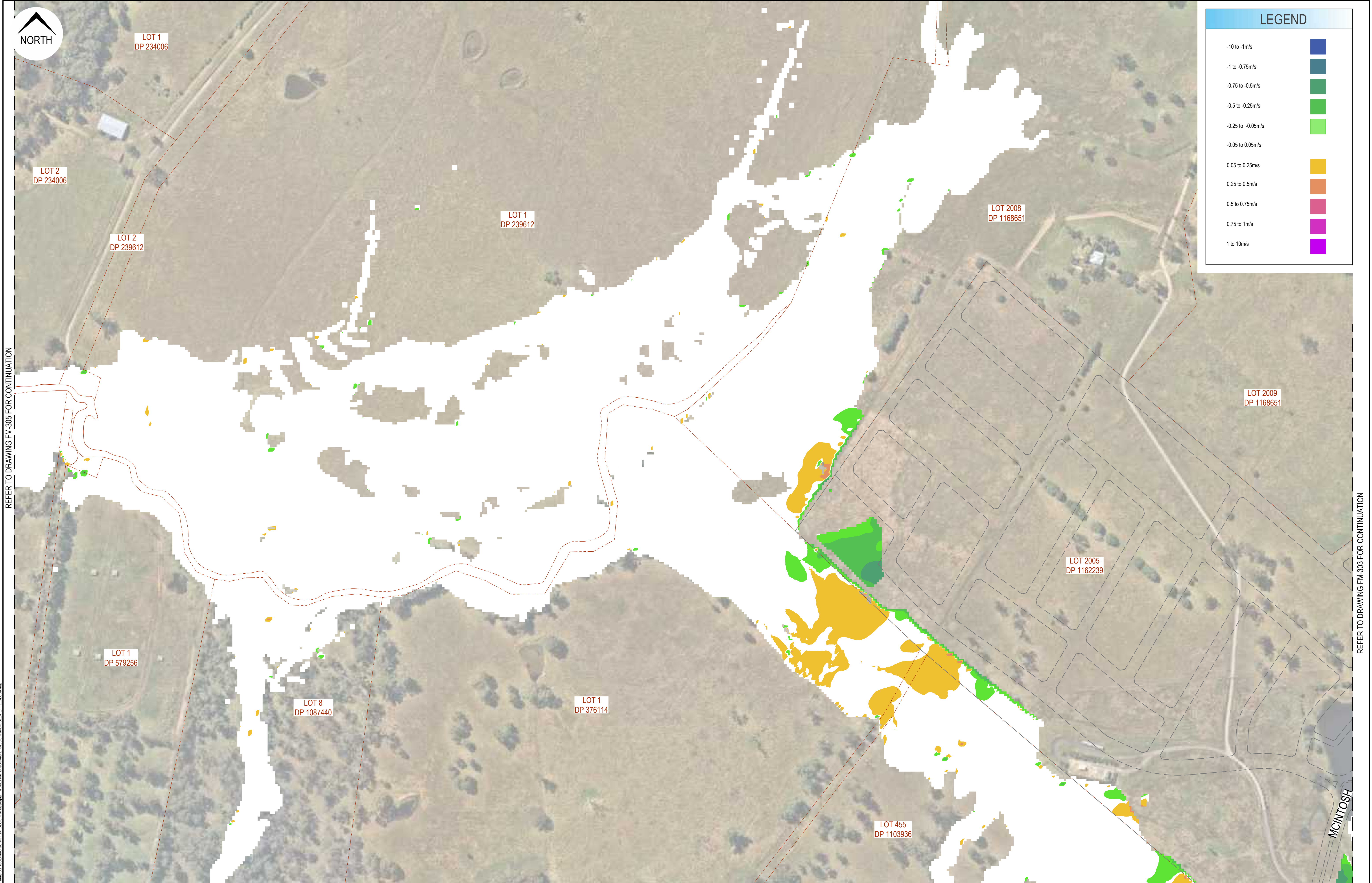


						Disclaimer and Copyright: ALL DIMENSIONS TO BE CHECKED ON SITE BY THE CONTRACTOR PRIOR TO CONSTRUCTION. USE WRITTEN DIMENSIONS ONLY. DO NOT SCALE. THESE DRAWINGS, PLANS, AND SPECIFICATIONS AND THE COPYRIGHT ARE THE PROPERTY OF ORION CONSULTING ENGINEERS PTY LTD AND MUST NOT BE REPRODUCED OR COPIED WHOLLY OR IN PART WITHOUT THE PERMISSION OF ORION CONSULTING ENGINEERS PTY LTD	Scale: 	For: 	By:  ABN:25 604 968 981 PO Box:7936, BAULKHAM HILLS NSW 2153 T:(02) 8660 0035 E:info@orionconsulting.com.au	  www.jas-anz.org/australia	Project: No. 531 COBBITTY ROAD, COBBITTY - INTEGRATED WATER CYCLE MANAGEMENT	Title: 5YR ARI 9HR PRE & POST FLOOD VELOCITY DIFFERENCE MAP SHEET 01 OF 03																							
<table><tr><th>Rev</th><th>Drawn</th><th>Design</th><th>Check</th><th>Appd.</th><th>Date</th><th>Revision Description</th></tr><tr><td>A</td><td>RC</td><td>CS</td><td>-</td><td>-</td><td>12/04/2023</td><td>ISSUED WITH IWCM MASTERPLAN REPORT</td></tr></table>						Rev	Drawn	Design	Check	Appd.	Date	Revision Description	A	RC	CS	-	-	12/04/2023	ISSUED WITH IWCM MASTERPLAN REPORT	<table><tr><td>Project No.</td><td>Set No.</td><td>Milestone</td><td>Plan</td><td>Revision</td></tr><tr><td>21-0258</td><td>07</td><td>FM</td><td>300</td><td>A</td></tr></table>						Project No.	Set No.	Milestone	Plan	Revision	21-0258	07	FM	300	A
Rev	Drawn	Design	Check	Appd.	Date	Revision Description																													
A	RC	CS	-	-	12/04/2023	ISSUED WITH IWCM MASTERPLAN REPORT																													
Project No.	Set No.	Milestone	Plan	Revision																															
21-0258	07	FM	300	A																															



							Disclaimer and Copyright: ALL DIMENSIONS TO BE CHECKED ON SITE BY THE CONTRACTOR PRIOR TO CONSTRUCTION. USE WRITTEN DIMENSIONS ONLY. DO NOT SCALE. THESE DRAWINGS, PLANS, AND SPECIFICATIONS AND THE COPYRIGHT ARE THE PROPERTY OF ORION CONSULTING ENGINEERS PTY LTD AND MUST NOT BE REPRODUCED OR COPIED WHOLLY OR IN PART WITHOUT THE PERMISSION OF ORION CONSULTING ENGINEERS PTY LTD										Scale: 										For: 										By:  ABN:25 604 069 981 PO Box:7936, BAULKHAM HILLS NSW 2153 T:(02) 8660 0035 E:info@orionconsulting.com.au										Project: No. 531 COBBITTY ROAD, COBBITTY - INTEGRATED WATER CYCLE MANAGEMENT										Title: 5YR ARI 9HR PRE & POST FLOOD VELOCITY DIFFERENCE MAP SHEET 02 OF 03 <table><tr><td>Project No.</td><td>Set No.</td><td>Milestone</td><td>Plan</td><td>Revision</td></tr><tr><td>21-0258</td><td>07</td><td>FM</td><td>301</td><td>A</td></tr></table>										Project No.	Set No.	Milestone	Plan	Revision	21-0258	07	FM	301	A
Project No.	Set No.	Milestone	Plan	Revision																																																																								
21-0258	07	FM	301	A																																																																								
A	RC	CS	-	-	12/04/2023	ISSUED WITH IWCM MASTERPLAN REPORT																																																																						
Rev	Drawn	Design	Check	Appd.	Date	Revision Description																																																																						

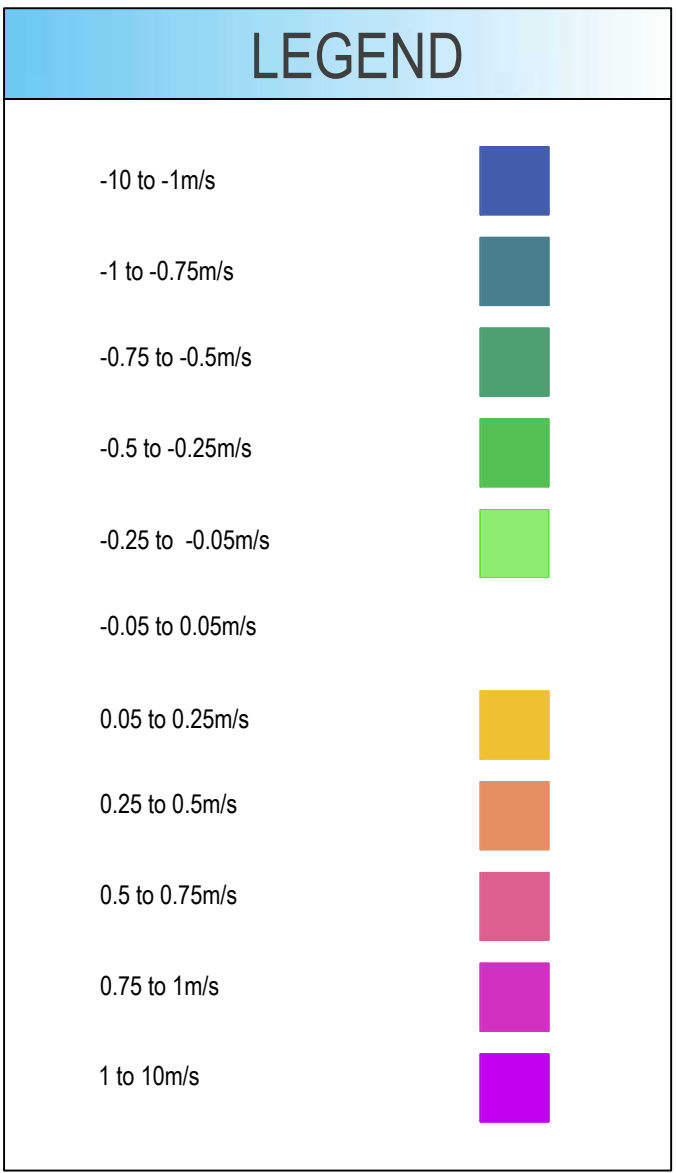
[illegible]



REFER TO DRAWING FM-303 FOR CONTINUATION

REFER TO DRAWING FM-303 FOR CONTINUATION

						<p>Disclaimer and Copyright: ALL DIMENSIONS TO BE CHECKED ON SITE BY THE CONTRACTOR PRIOR TO CONSTRUCTION. USE WRITTEN DIMENSIONS ONLY. DO NOT SCALE. THESE DRAWINGS, PLANS, AND SPECIFICATIONS AND THE COPYRIGHT ARE THE PROPERTY OF ORION CONSULTING ENGINEERS PTY LTD AND MUST NOT BE REPRODUCED OR COPIED WHOLLY OR IN PART WITHOUT THE PERMISSION OF ORION CONSULTING ENGINEERS PTY LTD</p>	<p>Scale:</p> 	<p>For:</p> 	<p>By:</p>  <p>ABN:25 604 069 981 PO Box:7936, BAULKHAM HILLS NSW 2153 T:(02) 8660 0035 E:info@orionconsulting.com.au</p>	  <p>www.jas-anz.org/register</p>	<p>Project:</p> <p>No. 531 COBBITTY ROAD, COBBITTY - INTEGRATED WATER CYCLE MANAGEMENT</p>	<p>Title:</p> <p>20YR ARI 9HR PRE & POST FLOOD VELOCITY DIFFERENCE MAP SHEET 02 OF 03</p>					
A	RC	CS	-	-	12/04/2023	ISSUED WITH IWCM MASTERPLAN REPORT											
Rev	Drawn	Design	Check	Appd.	Date	Revision Description											
													Project No. 21-0258	Set No. 07	Milestone FM	Plan 304	Revision A



						<div>Disclaimer and Copyright: ALL DIMENSIONS TO BE CHECKED ON SITE BY THE CONTRACTOR PRIOR TO CONSTRUCTION. USE WRITTEN DIMENSIONS ONLY, DO NOT SCALE. THESE DRAWINGS, PLANS, AND SPECIFICATIONS AND THE COPYRIGHT ARE THE PROPERTY OF ORION CONSULTING ENGINEERS PTY LTD AND MUST NOT BE REPRODUCED OR COPIED WHOLLY OR IN PART WITHOUT THE PERMISSION OF ORION CONSULTING ENGINEERS PTY LTD</div>	<div>Scale: <div><div>020406080100120140160180200</div><div>SCALE 1:2000 (A1)</div></div><div><div>SCALE 1:4000 (A3)</div></div></div>		<div>For: <div><div><div></div><div>mirvac</div></div></div></div>		<div>By: <div><div><div><div><div></div><div>SUSTAINABLE</div><div>2022</div><div>WATER</div></div><div>www.jas-anz.org/register</div></div><div><div><div></div><div>JAS-ANZ</div><div>2022</div><div>WATER</div></div></div></div><div><div>Orion Consulting</div></div></div></div>		<div>Project: <div><div>No. 531 COBBITTY ROAD, COBBITTY - INTEGRATED WATER CYCLE MANAGEMENT</div></div></div>		<div>Title: <div><div>100YR ARI 9HR PRE & POST FLOOD VELOCITY DIFFERENCE MAP SHEET 01 OF 03</div></div></div>								
A RC CS - - 12/04/2023 ISSUED WITH IWCM MASTERPLAN REPORT																							
Rev	Drawn	Design	Check	Appd.	Date	Revision Description																	
														Project No: 21-0258		Set No: 07		Milestone: FM		Plan: 306		Revision: A	



						<p>Disclaimer and Copyright: ALL DIMENSIONS TO BE CHECKED ON SITE BY THE CONTRACTOR PRIOR TO CONSTRUCTION. USE WRITTEN DIMENSIONS ONLY. DO NOT SCALE. THESE DRAWINGS, PLANS, AND SPECIFICATIONS AND THE COPYRIGHT ARE THE PROPERTY OF ORION CONSULTING ENGINEERS PTY LTD AND MUST NOT BE REPRODUCED OR COPIED WHOLLY OR IN PART WITHOUT THE PERMISSION OF ORION CONSULTING ENGINEERS PTY LTD</p>	<p>Scale:</p>  <p>SCALE 1:2000 (A1) SCALE 1:4000 (A3)</p>	<p>For:</p> 	<p>By:</p>  <p>ABN:25 604 069 981 PO Box:7936, BAULKHAM HILLS NSW 2153 T:(02) 8660 0035 E:info@orionconsulting.com.au</p>	 <p>www.jas-anz.com.au</p>	<p>Project:</p> <p>No. 531 COBBITTY ROAD, COBBITTY - INTEGRATED WATER CYCLE MANAGEMENT</p>	<p>Title:</p> <p>100YR ARI 9HR PRE & POST FLOOD VELOCITY DIFFERENCE MAP SHEET 02 OF 03</p>																						
<table><tr><th>Rev</th><th>Drawn</th><th>Design</th><th>Check</th><th>Appd.</th><th>Date</th><th>Revision Description</th></tr><tr><td>A</td><td>RC</td><td>CS</td><td>-</td><td>-</td><td>12/04/2023</td><td>ISSUED WITH IWCM MASTERPLAN REPORT</td></tr></table>						Rev	Drawn	Design	Check	Appd.	Date	Revision Description	A	RC	CS	-	-	12/04/2023	ISSUED WITH IWCM MASTERPLAN REPORT					<table><tr><th>Project No.</th><th>Set No.</th><th>Milestone</th><th>Plan</th><th>Revision</th></tr><tr><td>21-0258</td><td>07</td><td>FM</td><td>307</td><td>A</td></tr></table>	Project No.	Set No.	Milestone	Plan	Revision	21-0258	07	FM	307	A
Rev	Drawn	Design	Check	Appd.	Date	Revision Description																												
A	RC	CS	-	-	12/04/2023	ISSUED WITH IWCM MASTERPLAN REPORT																												
Project No.	Set No.	Milestone	Plan	Revision																														
21-0258	07	FM	307	A																														

