

Sustainability Strategy

2020-24



Resilient. Healthy. Connected.



Sustainability Strategy

Published 2020

Acknowledgments

Council acknowledges and extends appreciation to all contributors.

Availability



The Sustainability Strategy is available on Council's website: www.camden.nsw.gov.au

Copyright

All information, graphics and photographs are copyright of Camden Council unless otherwise noted. The content is protected by Australian and International Copyright and Trademark laws.

For further information contact:

✉ Camden Council
70 Central Avenue
Oran Park NSW 2570

☎ 4654 7777

✉ mail@camden.nsw.gov.au

Credits:

Page 5 – Art by Danielle Mate Sullivan, 2020

Page 15 – Photograph of Earth Hour picnic by Adam Williamson, 2019

Page 18 – Photograph of Cockatoo by Dr. John Martin, Australian Botanic Gardens

Pages 23,33 & 37 – Energy, water and emissions data provided by Resilient Sydney www.resilientsydney.com.au

Page 38 – Photograph of Rainbow Lorikeet by Owen Sinden, 2019 Macarthur Nature Photography Competition

Table of Contents

	Pg
1. Introduction	4
2. Aboriginal Recognition	5
3. Camden Context	6
4. What is Sustainability	12
5. What We Heard	13
6. Overview of Themes	16
7. Strategy Context	17
8. Strategy Themes	23
8.1 Creating Sustainable Urban Environments	23
8.2 Protecting Our Natural Environments	28
8.3 Improving Resilience to Climate Change	32
8.4 Building Sustainable Communities	36
8.5 Leading by Example	40
9. Implementation and Monitoring	45
Appendix	46

Sustainable Camden

Resilient. Healthy. Connected.

1. Introduction

The Camden Local Government area is currently the fastest growing LGA in Australia, with more than 100 residents calling Camden home each week. With this growth, there are challenges to overcome and opportunities to be realised to ensure we create a liveable environment for residents and visitors for years to come.

Sustainability is generally considered to be about the trees, waterways and the air we breathe. But as the local government responsible to grow a Sustainable Camden, it is also about creating urban environments that protect our rural heritage, protect and enhance our natural environment, while ensuring we are a resilient, healthy and connected community.

This Strategy is an acknowledgement by Council of its commitment to increasing action on sustainability and working with the community and other important local stakeholders to achieve positive outcomes for the local environment.

The Sustainability Strategy is a four-year plan that brings together actions Council will implement to work towards creating a Sustainable Camden. The Sustainability Strategy is a whole-of-Council approach, linked to the key directions outlined in the Camden Community Strategic Plan and the local priorities of the Camden Local Strategic Planning Statement.

The Sustainability Strategy addresses five key themes, being:

- **Building Sustainable Communities** - to increase awareness, knowledge and capacity in our communities so that they can respond and take action on sustainability issues;
- **Creating Sustainable Urban Environments** - to embed sustainability principles into urban planning and design to support the delivery of low carbon communities;
- **Improving Resilience to Climate Change** - to understand the climate risk for the Camden LGA and build resilience to climate and natural disasters;
- **Protecting Our Natural Environments** - to improve biodiversity management and the health of our waterways; and
- **Leading by Example** - to demonstrate leadership to the community by improving the sustainability performance of Council.

Within each of the themes, the key issues are identified as well as actions that Council is already doing to work towards goals aligned with state government targets. New initiatives or actions that Council will implement over the next four years are outlined, with our achievements or success to be monitored by the success measures that have been identified for each theme.

Council is committed to creating a Sustainable Camden for a resilient, healthy and connected community.

2. Aboriginal Recognition

Council acknowledges the Dharawal people as the traditional custodians of this land and pay our respect to their Elders both past and present.

This artwork represents country, both land and water. It shows the feet at the base and the journey lines that connect across country, representing our life journey and its different paths.



3. Camden Context

The Camden Local Government Area covers a total land area of 206 square kilometres and is renowned for its rural and heritage character, set in landscapes of scenic and natural beauty.

As a rapidly growing area with a population forecasted to grow to 233,950 by 2036, Camden contains a mix of agricultural land, country towns and villages, new residential areas, commercial and industrial development. In the context of the Western Sydney Airport, Camden offers unique opportunities presented by urban development and population growth, but this also presents challenges in ensuring the protection and enhancement of the local environment including our rivers, creeks and bushland.

A significant portion of the northern part of Camden has been identified for future urban development by the NSW Department of Planning, Industry and Environment and is known as the South West Growth Area (SWGA). Most of the residential growth for Camden is being planned to occur within the SWGA boundary including associated infrastructure required to be delivered in this area. As the SWGA continues to develop, new centres will be delivered to provide a diversity of employment and housing for future residents.

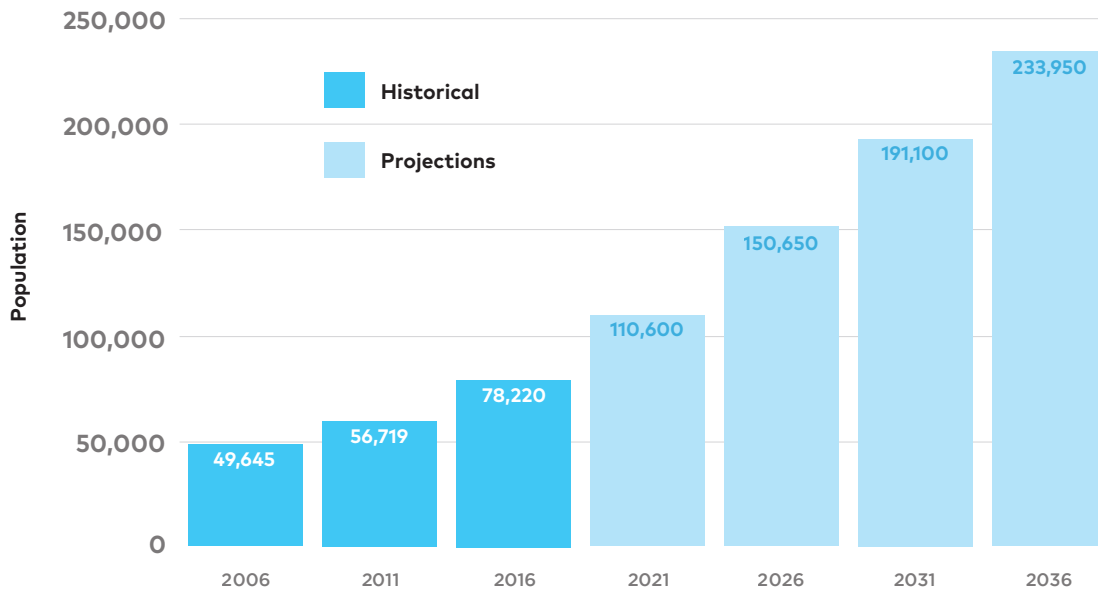
Camden was established as part of the agricultural expansion of the early settlement of Sydney, being one of Sydney's oldest towns. The local community holds the Camden Town Centre in high regard for its attractive streets, beautiful heritage buildings, and rural village feel. Leppington and Narellan are identified to be the principal future retail and commercial hubs in Camden, with higher-order, strategic centres envisaged for these locations.

Over the next 20 years, Council will need to plan for new homes, jobs and services for an additional 140,000 people, while protecting and enhancing Camden's distinctive local character and natural environment. This is an opportunity to ensure that growth is undertaken in a way that not only minimises local impacts but also maximises sustainability outcomes with designs that are locally relevant and efficient.

As the population of Camden continues to grow so does the diversity and background of our residents. This diversity brings many benefits to the community and provides opportunities to share experiences, perspectives and knowledge and build strong, cohesive and connected communities.

Demographics

Population Growth (2006 to 2036)

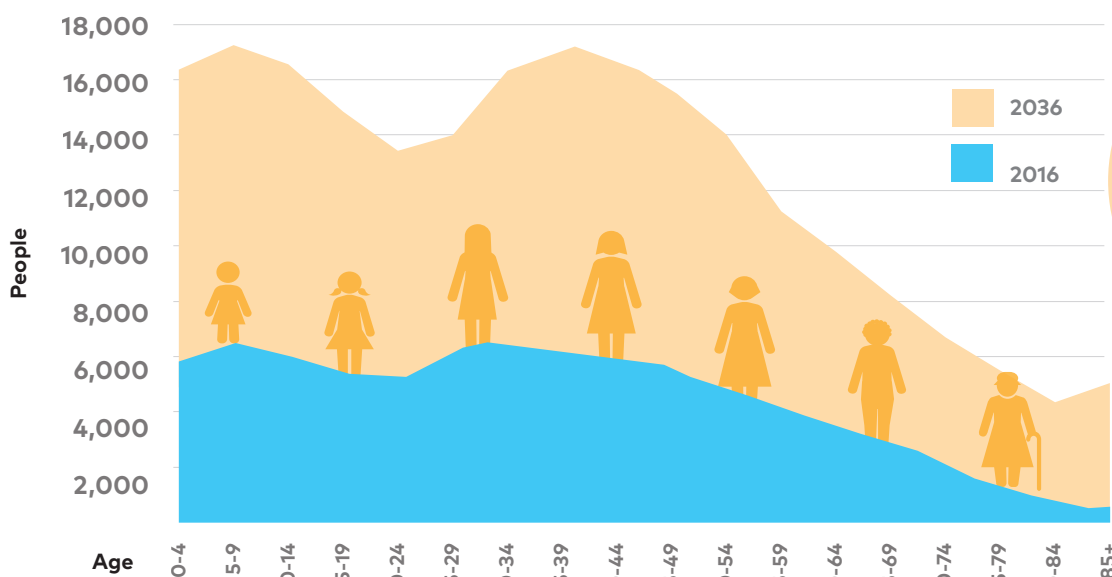


Fastest
growing
LGA in
Australia

199%
increase
(2016 - 2036)

5.63%
forecast average
annual growth
rate to 2036

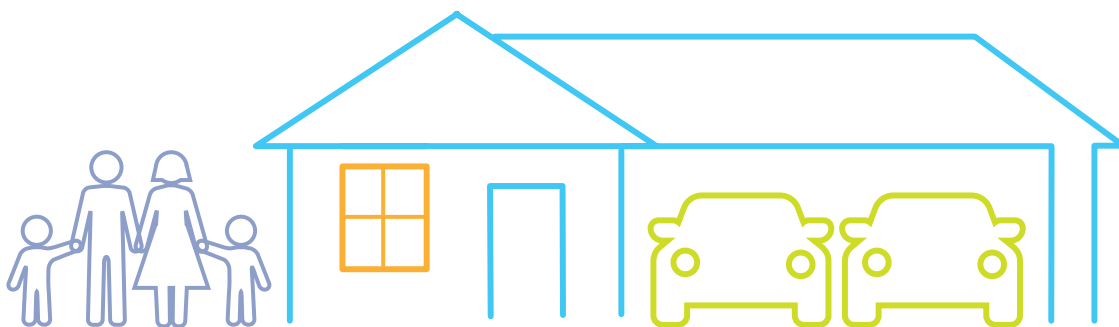
Age Profile (2016 & 2036)



In
2036 Increased
percentage of
Mature Adults
(45 - 65) and
Retirees (65+)



Household Statistics (2016)



2.93

average
people per
dwelling

3.70

average
bedrooms per
dwelling

2.05

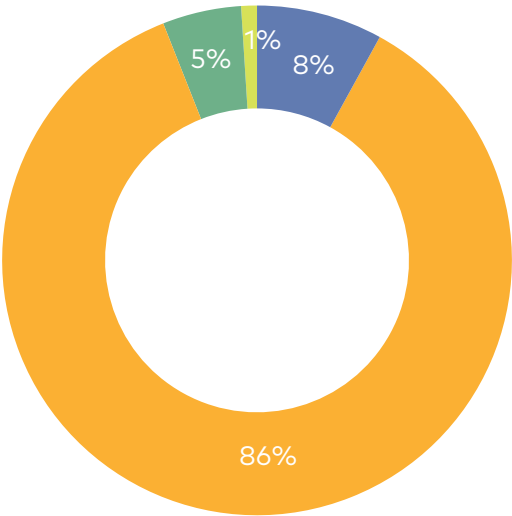
average
cars per
household

* Camden Trend = 2011-2016



Method of Travel to Work (2016)

	Camden	Camden Trend*	Western City District
Private Vehicle	86%	↓	80%
Public Transport	8%	↑	14%
Work at Home or Other	5%	↑	4%
Active Transport	1%	↓	2%



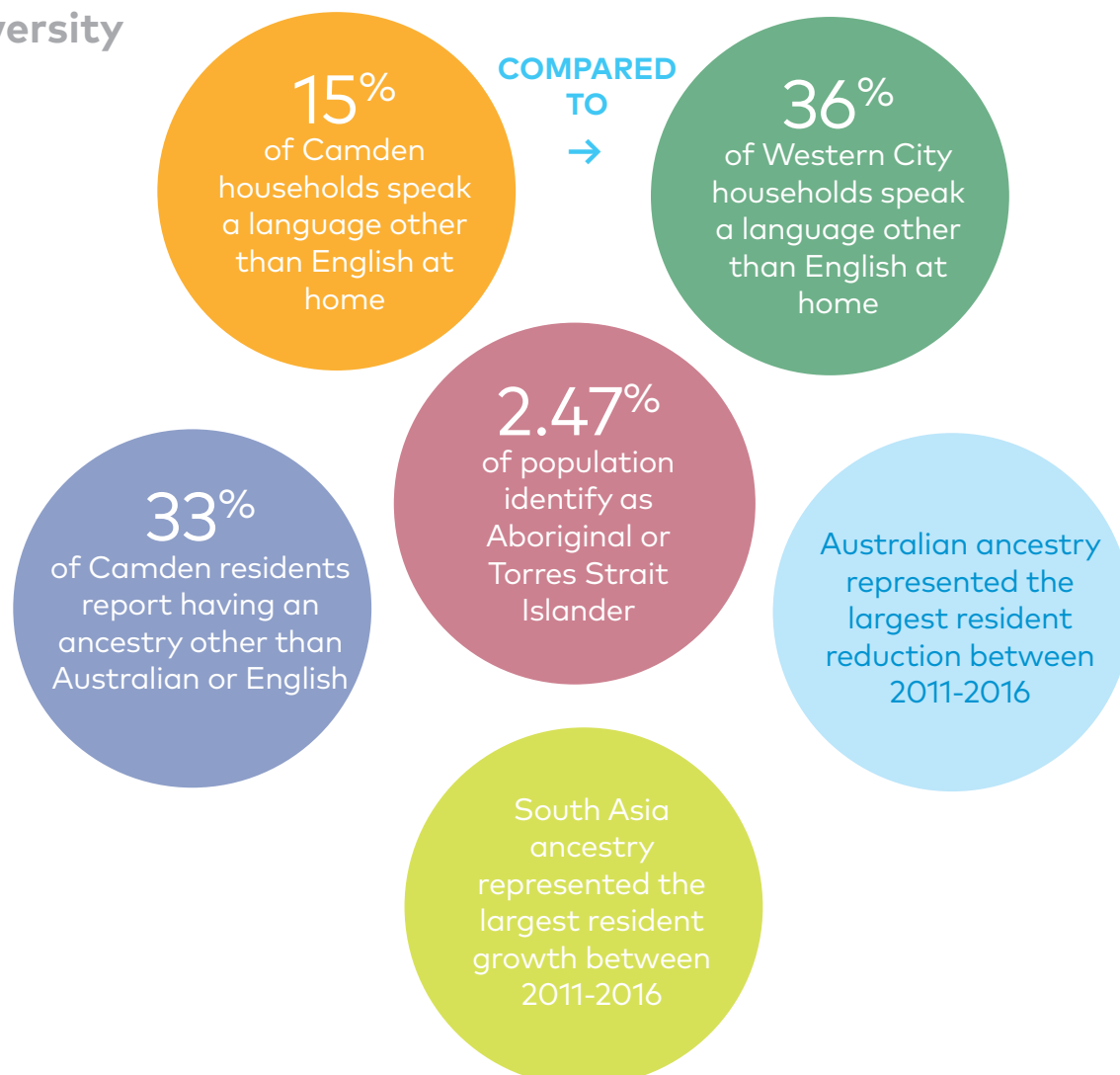
*Camden Trend = 2011-2016

Housing Growth (1996 to 2036)





Diversity



4. What is Sustainability?

Our environment is more than trees, waterways and the air we breathe.

The environment is a dynamic relationship between all living and non-living things. It is everything within and around us – the air we breathe, our favourite places to relax and the communities that we create.

At Camden, we understand that environmental sustainability is highly valued by our community. Our environment is many things – it can be a place of work; where we connect; it supports our health and wellbeing; and provides important ecological services.

To achieve environmental sustainability, we must reduce our environmental impacts and live within the limits that the environment provides. Creating this balance is particularly important as we continue to grow so that the needs of our people and ecosystems can be provided for both now, and into the future.



5. What We Heard

Understanding the needs and concerns of the community is pivotal to ensure the needs of the community and the natural environment are fulfilled. This plan strives to balance the needs of a rapidly growing community as well as safeguarding and elevating environmental outcomes.

To shape this strategy, we have relied on the

feedback from the community that was recently captured as part of the development of the Local Strategic Planning Statement (LSPS). The LSPS is a 20-year planning instrument that is designed to adapt and meet the needs of the community for the coming 20 years.

Key themes from this feedback that are relevant to this Strategy are outlined below.



• Importance of local waterways

The Nepean River, and other local waterways including South Creek were consistently identified as a key natural landmark to be protected and promoted.



• Climate change and resilience

There is community support for action to address climate change and to minimise the impacts of climate change on our community and the local environment. Building community capacity to react and adapt to natural hazards and extreme weather events is an important area of focus.



• Balancing growth

Rural and natural landscapes within the Camden area are highly valued by the community. There is an expectation that growth in the area is actively managed to provide a balance of natural and urban areas.



• Transport and infrastructure

Growth is supported by the planning and delivery of important infrastructure to meet community needs. There was a strong focus on transport infrastructure, but this also needs to include employment, health and education, housing and green infrastructure.



• Protecting biodiversity

The community appreciates the presence of local native bushland which is also a significant feature of the area. There is community support to protect and enhance local biodiversity to secure healthy and successful populations.



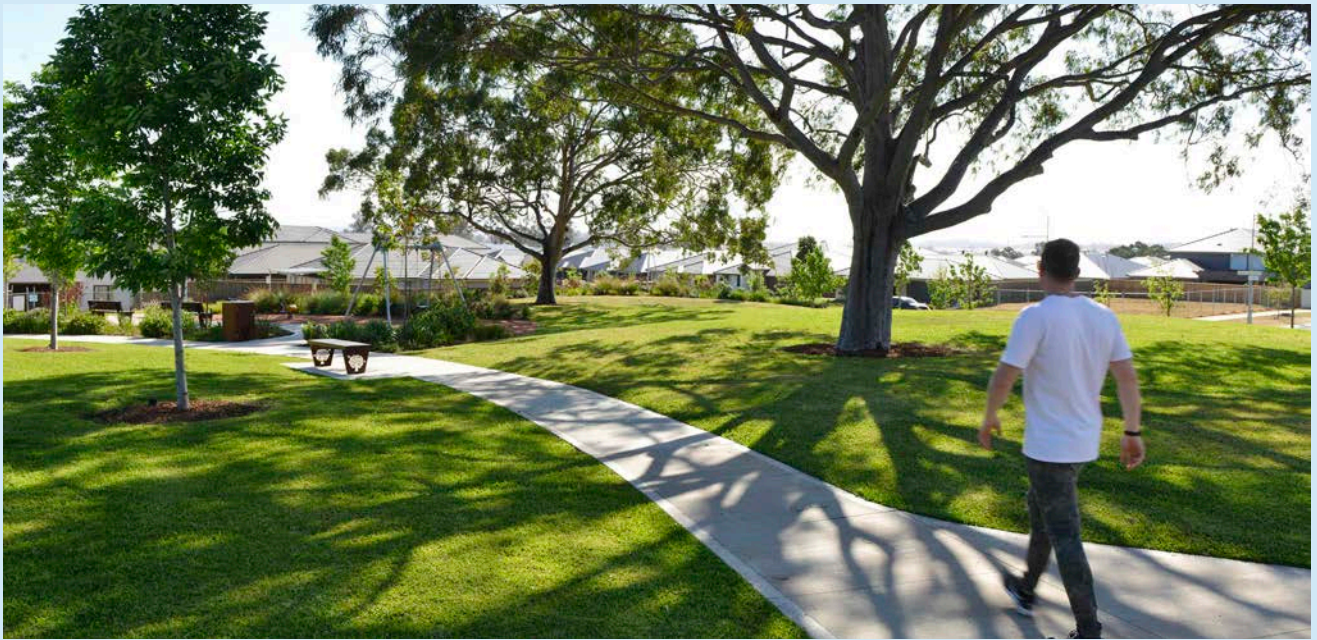
• Liveable green spaces

People want connected, accessible and family friendly public spaces with local waterways, natural areas and open spaces for relaxation, enjoyment and recreation.



6. Overview of Themes

Based on the vision and aspirations for the future of Camden from the local community, the directions provided by State and Federal plans and strategies as well as a review of local information five themes have been developed to focus and prioritise action towards sustainability.



Creating Sustainable Urban Environments

With so much planned growth progress is required to embed sustainability into urban planning and development to assist communities adapt to a changing climate, and to increase connectivity and access to natural areas.

Success measures

By 2024:

- 25% increase in tree canopy coverage;
- 30% increase in dwellings with solar installed; and
- 10% decrease in average household water use.



Protecting Our Natural Environments

Camden is a place of many highly valued natural assets such as waterways and bushland areas including endangered ecological communities. These places offer a natural haven for a variety of fauna and flora and are highly prized by the local community.

Actions are needed to improve the management of these areas and ensure their long-term health.

Success measures

By 2024:

- 20% increase in the amount of actively managed bushland;
- 20% increase in community involvement in the management of natural areas; and
- Improvement in waterway health report card score for priority waterways.

Improving Resilience to Climate Change

A changing climate creates not only global but regional challenges with communities, infrastructure and natural areas impacted. Changes to our climate are expected to include increases in extreme temperatures and weather events, as well as changes to the timing and distribution of rainfall and fire seasons.

Understanding what these changes mean for the local community and environment is important so that we can put measures in place to respond and recover.

Success measures

By 2024:

- Risk/adaptation strategies implemented for 100% of the LGA's extreme and high risks;
- 80% of residents believe they have the information and resources needed to prepare, respond and recover from adverse events; and
- 15% reduction in Camden Council emissions.





Building Sustainable Communities

Camden residents value the character and uniqueness of the region – a country town feel, lifestyle and rural aspect. It is important that we work with our communities and other important local partners to build knowledge and capacity within our community around key sustainability issues.

With the significant changes also planned to take place within the Local Government Area it's important that Council also acts as an advocate around important sustainability issues to ensure their consideration in policy and planning decisions.

Success measures

By 2024:

- 5% reduction in residential food waste to landfill; and
- 80% of workshop attendees plan to take action to live more sustainably.



Leading by Example

Council has an important leadership role in the local community. What we do and how we behave has the potential to demonstrate and drive wide-spread positive environmental transformational changes.

Measures to improve resource efficiency, trial innovative technologies and to drive the uptake of renewable energy are needed. Council can also demonstrate sustainable management through improvements to the delivery of our services and ensuring that new facilities apply best practice sustainability standards.

Success measures

By 2024:

- **20% reduction in Council energy use per capita;**
- **20% increase in renewable energy generated;**
- **20% reduction in potable water use per capita at Council facilities;**
- **Measure and report all Council waste; and**
- **Sustainability criteria included in all tenders.**

7. Strategy Context

This Sustainability Strategy exists within the context of Council's existing plans that provide the vision and overarching strategic direction.

Council's Community Strategy Plan 2017 (CSP) has a vision of 'A Sustainable Camden LGA by 2040' and is built around six key directions to drive action towards achieving the vision. The CSP is based around achieving outcomes across social, environmental, economic and civic leadership aspects over a 20-year timeframe. The CSP is supported by a four-year Delivery Program (2017-21).

The Local Strategic Planning Statement 2020 (LSPS) complements the CSP with a 20-year planning vision, emphasising land use, transport and sustainability objectives to demonstrate how Camden will change to meet the community's needs. It helps to direct how future growth will be managed.

This Strategy aligns with and builds upon the CSP and LSPS, bringing the intent of the documents together and providing additional detail.

Sustainability Themes & CSP						
	Actively Managing Camden's Growth	Healthy Urban & Natural Environment	A Prosperous Economy	Effective & Sustainable Transport	An Enriched & Connected Community	Strong Local Leadership
Creating Sustainable Urban Environments	✓	✓			✓	✓
Protecting Our Natural Environments	✓	✓			✓	
Improving Resilience to Climate Change			✓	✓	✓	✓
Building Sustainable Communities			✓		✓	✓
Leading by Example	✓	✓		✓	✓	✓

8. Strategy Themes

8.1 Creating Sustainable Urban Environments

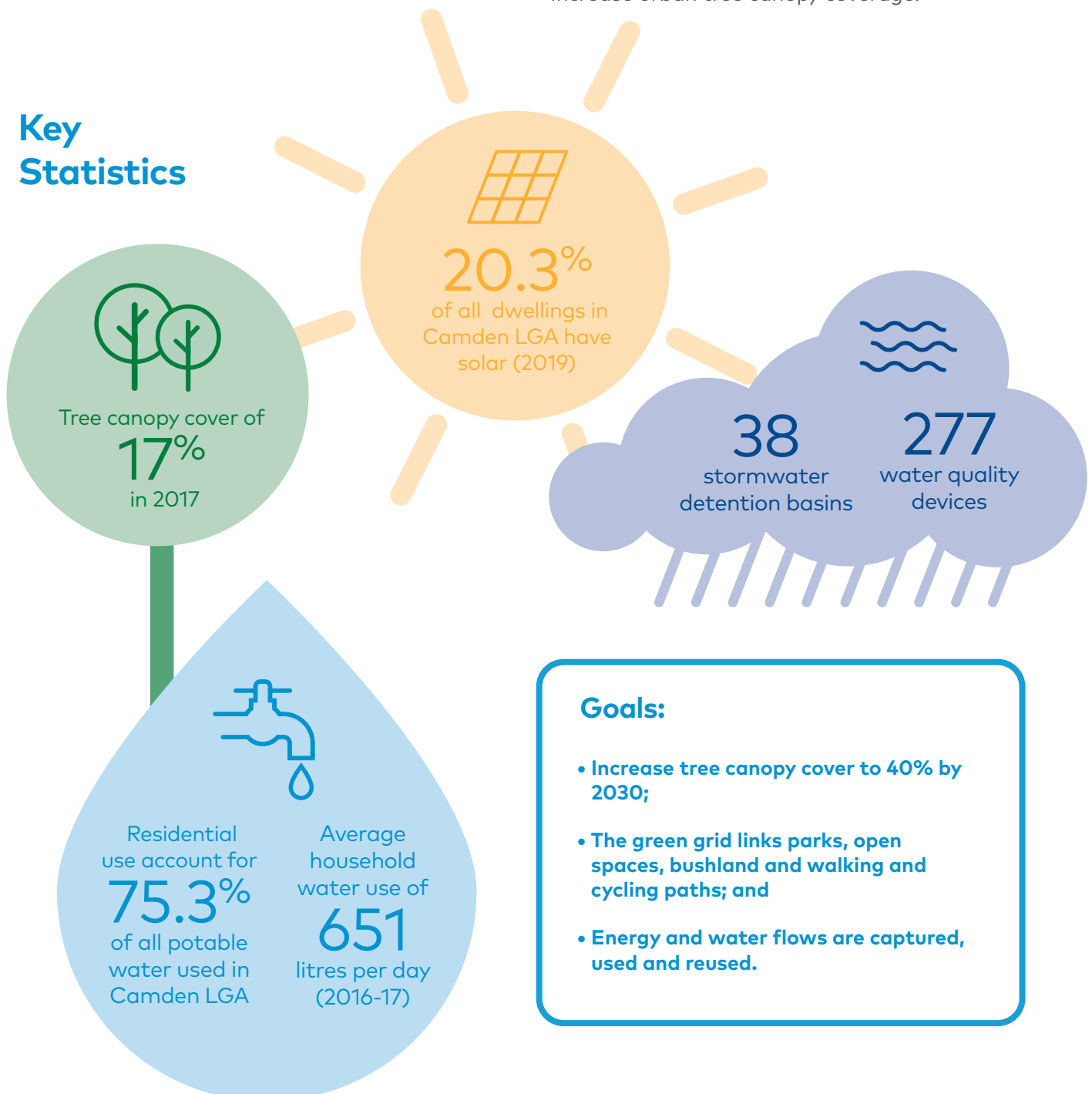
With so much new growth underway and planned for the future we need to ensure sustainability is embedded into urban planning and development.

Having the right planning in place can assist in ensuring new development is as sustainable and efficient as possible, provides connectivity and access to natural areas and is adapted to our local climate.

This theme covers the following objectives:

- Embed sustainability into urban planning and design;
- Deliver low carbon precincts;
- Maximise connectivity and accessibility to the River and South Creek; and
- Increase urban tree canopy coverage.

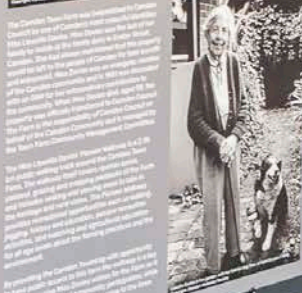
Key Statistics



What have we already done?

CAMDEN TOWN FARM

MISS LLEWELLA DAVIES PIONEER WALKWAY



Miss Llewella Davies Pioneer Walkway

This important walkway was established in 2019 at the Camden Town Farm, and provides an integrated green and recreational network which contributes to improved liveability for the community.

The popular walkway is an important link located close to the centre of Camden and connects the community with the Nepean River, and the agricultural heritage of the area. The walking

track provides access to three different accessible paths, covering about 2.3 kilometres around the perimeter of the farm and provides both significant heritage and scenic vistas.

This project enhances and supports the blue and green grid. It also provides physical and visual connections to waterways and green spaces and activates open spaces by creating a network of accessible paths to urban areas.



Council has been proactive in requiring the use of water sensitive urban design in both public and private developments to contribute to local water quality. This includes the use of swales, biofilters, rainwater tanks and wetlands, vegetative buffer strips, detention basins and gross pollutant traps.

A rolling program of street tree planting continues to be undertaken across the LGA to actively replace trees and contribute to building the urban canopy.

Council has also established a successful Developers Forum which is held regularly to communicate with local developers. The forum is a great way to share information around sustainability and waste issues and forge stronger partnerships.

A number of projects are also underway:

- Development of a Local Housing Strategy is underway, including the delivery of healthy and sustainable communities as a key priority of the strategy. The document will outline and support options to make housing within the LGA more sustainable;
- Preparation of a Green and Blue Grid Analysis is almost complete to translate and connect the District Green Grid down to the local level within the Camden LGA and identify key connections and projects; and
- Council is working with the State Government and other stakeholders to progress the planning of Leppington as a low-carbon precinct.



Objective	Action
URB1 - Embed sustainability into urban planning and design	URB1.1 Undertake a review of planning controls to ensure sustainability principles are embedded and local climate is considered.
	URB1.2 Develop a Sustainable Homes program, identifying energy and water efficiency retrofit opportunities as well as Camden specific sustainability information for new and existing homes.
	URB1.3 Ensure new release areas have adequate space for street trees.
	URB1.4 Increase the use of water sensitive urban design on public land.
	URB1.5 Prepare a water sensitive urban design policy.
	URB1.6 Create a water efficient landscape standard for use in public and private development.
	URB1.7 Work with water service providers to design and deliver infrastructure, water servicing and development approaches that best contribute to local and regional water supply and water cycle management.
	URB1.8 Review planning and development controls for car share, electric vehicle and active transport facilities and connections across the Camden LGA.
URB2 - Deliver sustainable precincts	URB2.1 Investigate planning and development controls and the use of incentives to encourage improvements in water and energy efficiency and the use of renewable energy in growth precincts.
	URB2.2 Work with developers and Sydney Water to encourage the delivery of recycled water systems in new developments.
	URB2.3 Advocate for the development of low carbon precincts within the South West Growth Area, with Leppington Town Centre as a pilot precinct.
	URB2.4 Engage NSW State government and developers to deliver Leppington as a low carbon precinct, using Green Star Communities tool as the benchmark.
	URB2.5 Ensure Green and Blue Grid principles are considered in the master planning and design of new precincts.
URB3 - Maximise connectivity and accessibility to the River	URB3.1 Identify and implement projects to enhance the Green and Blue Grid.
	URB3.2 Increase physical and visual connection to waterways and green spaces including linking cycling and walking network to the green corridor.
	URB3.3 Investigate opportunities to activate and enhance the Nepean River.
URB4 - Increase urban tree canopy coverage	URB4.1 Identify opportunities to implement improved canopy cover on public and private land.
	URB4.2 Develop a street and public tree masterplan to inform LGA-wide planting program.

How will we measure our success?

- By 2024:**
- 25% increase in tree canopy coverage.
 - 30% increase in dwellings with solar installed.
 - 10% decrease in average household water use.

8.2 Protecting Our Natural Environments

Camden is a place of many highly valued natural assets including waterways and bushland areas. These places offer a natural haven for a variety of fauna and flora and are highly prized by the local community.

The Nepean River and South Creek are important waterways with strong cultural ties for the community while our bushland reserves host significant biodiversity including threatened plant and animal species, as well as five endangered ecological communities.

Strong action is needed to protect and enhance our waterways and bushland to ensure their long-term health and viability.

This theme includes the following objectives:

- Improve biodiversity management; and
- Improve waterway health.

Key Statistics



870

individual plant species, with 5 threatened plant species in the LGA

22,000

native trees, shrubs and grasses planted in 2019



5

endangered ecological communities in the LGA



1,763

hours worked by Bushcare volunteers in 2018-19



248

recorded animal species, with 25 threatened animal species in the LGA

3

blue-green algae red alerts detected and notified to the community in 2019

Goals:

- Plans are in place to strategically manage council owned and managed bushland;
- Projects to improve water quality are delivered;
- Increase in the amount of actively managed bushland;
- Increase in community involvement in the management of natural areas; and
- Improvement in the health of priority waterways.

What have we already done?

A wide-angle photograph of a large field where a group of people are engaged in a tree-planting activity. Numerous small, young trees, each protected by a light green plastic sleeve, are planted in neat rows across the field. Several people are visible, some kneeling to plant or tend to the saplings, while others stand further back. The ground is dry and brownish, and the background shows a line of trees under a clear blue sky.

Creating habitat for Camden White Gum

This project saw the restoration of 800 metres of River-Flat Eucalypt Forest along the Nepean River, adjoining Camden Town Farm. More than four hectares of woody weeds were removed with replacement planting of 22,000 trees, shrubs and grasses. This included planting of 200 nationally threatened Camden White Gums with staff, community and school groups assisting through a number of planting events at the site.

Council actively manages more than 94 hectares of natural areas across the LGA, with more land expected to come into Council ownership through the delivery of new development.

In 2019, Council was successful in setting up a Biobanking Agreement to protect 40 hectares of endangered bushland at Gundungurra Reserve, Spring Farm. A Biodiversity Stewardship Application will also be lodged to protect an additional 17 hectares of endangered bushland across Camden Golf Club, Parrot's Farm and King's Bush Reserves.

Council delivers a successful Bushcare program with seven volunteer Bushcare groups operating across the LGA in our bushland reserves.

Regular monitoring of the Nepean River and recreational water bodies is undertaken to check for physical and chemical properties, as well as the presence of blue-green algae.

A number of projects are also underway:

- Review and update of the Biodiversity Strategy;
- Development of a Nepean River Biodiversity Corridor Masterplan;
- Trial of remote water quality sensors in South Creek;
- Preparation of a consolidated Plan of Management for community land; and
- Inclusion of environmentally sensitive land and riparian land in the Local Environment Plan (LEP).

Objective	Action
NAT1 - Improve biodiversity management	NAT1.1 Advocate for the retention of remnant vegetation in the master planning of new urban areas.
	NAT1.2 Develop management plans for areas of high biodiversity value.
	NAT1.3 Develop a fauna pest management strategy to address risks to biodiversity.
	NAT1.4 Maintain, improve and create new habitats for threatened flora and fauna species identified in bushland and waterways.
	NAT1.5 Increase use of native flora in urban areas to extend habitat connectivity.
	NAT1.6 Monitor the extent and condition of Council owned and managed bushland areas and identify additional funding opportunities to deliver a high-quality conservation and restoration program.
	NAT1.7 Investigate establishing a nursery facility to propagate and grow local native plants for restoration and community projects.
	NAT1.8 Investigate opportunities to expand the Bushcare program.
NAT2 - Improve waterway health	NAT2.1 Undertake a review of Camden's waterways and riparian areas and develop and implement a program of prioritised waterway erosion control and rehabilitation projects.
	NAT2.2 Support the State Government in developing a strategy to restore and protect South Creek.
	NAT2.3 Develop and publish a waterway health report card for priority waterways within the LGA.
	NAT2.4 Develop and implement a Stormwater Improvement Plan identifying projects to improve water quality, for example, through water sensitive urban design, water treatment devices.
	NAT2.5 Undertake a program of compliance activities to reduce stormwater pollution from building sites.

How will we measure our success?

By 2024:

- 20% increase in the amount of actively managed bushland.
- 20% increase in community involvement in the management of natural areas.
- Improvement in waterway health report card score for priority waterways.

8.3 Improving Resilience to Climate Change

The Western City District Plan identifies the most significant natural hazards and acute shocks that affect the Western City District include bushfire, flooding and urban heat. These natural phenomena will be exacerbated by climate change.

Climate change projections for south western Sydney are for an increase in average, minimum and maximum temperatures with the greatest change likely to be experienced during spring. At the same time rainfall is expected to become more variable, with an increase in extreme rainfall events into the future. Predictions are for increased rainfall in autumn and decreased rainfall during spring.

At the same time increasing urbanisation will act to compound the impact of climate change and combined with an increase in the number of heatwaves and extreme temperature days action to cool Camden will be required.

Understanding what these changes mean for the local community and environment is important so that we can put measures in place to respond and recover.

This theme includes the following objectives:

- Understand climate risks for Camden LGA;
- Minimise the impact of urban heat;
- Deliver climate mitigation and adaptation initiatives; and
- Build resilience to climate and natural disasters.

32 days
over 35°C in 2019
compared with the long-term
average of 13 (1972-2018)

6 days over 40°C
in 2019 compared with the
long-term average of
2 days (1972-2018)

Community CO2e
emissions of
2749.81_{kt}
in 2016/17

55 days
with poor, very poor or hazardous air quality
in 2019 up from 15 in 2018

304.4mm
Average annual rainfall in 2019
compared with 782.1mm between
the years of 1943-2019

Goals:

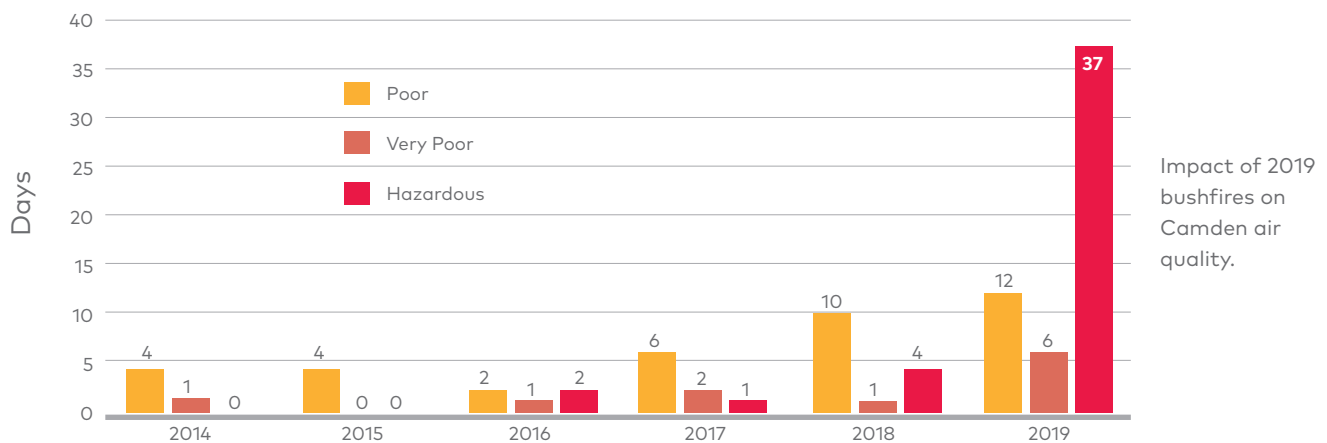
- Zero net emissions by 2050.
- People and places adapt to climate change and future shocks.
- Exposure to natural and urban hazards is reduced.
- Heatwaves and extreme heat are managed.

What have we already done?

New South Wales experienced its worst fire season on record during the 2019-20 summer, made more severe by drought conditions and high temperatures. The bushfires resulted in significant and ongoing bushfire smoke hazards across the Sydney metropolitan area, including Camden. The graph shows the significant increase in days with poor, very poor or hazardous air quality, with 55 days recorded in 2019, compared to 15 days in 2018.

In response to the poor air quality Council developed an Interim Poor Air Quality Protocol in late 2019. This protocol provides a structured and consistent approach to monitoring and responding to poor air quality so that action could be taken, consistent with NSW Health Guidelines, to protect workers who may be exposed to poor air quality.

Camden Air Quality (2014-2019)



Council has two fully accessible and free water play parks for the local community located at Curry Reserve, Elderslie and Dawson Park, Oran Park. These facilities not only provide important recreational value but also provide a free and accessible place to cool off during extreme heat events for vulnerable members of the community.

Camden Council is an active participant in the Resilient Sydney project. The Resilient Sydney Strategy is the first resilience strategy for metropolitan Sydney and was developed on behalf of, and with the input of, all of Sydney's metropolitan councils along with contributors from the NSW Government, business and community organisations.

The development of Open Space and Public Buildings Design Guidelines is underway to set minimum standards for all new and existing buildings and open spaces in terms of material selection, shading, provision of water refill stations and other climate resilience features.

Flood Risk Management Plans are currently being reviewed to incorporate relevant climate change projections.

Objective	Action
RES1 - Understand climate risks for Camden LGA	RES1.1 Mitigate the urban heat island effect and reduce vulnerability to extreme heat.
	RES1.2 Work with Western Sydney District councils to develop standardised engineering specifications to address liveability and urban heat.
	RES1.3 Undertake floodplain risk management plans for Nepean River and South Creek catchments incorporating climate change projections.
	RES1.4 Undertake a climate risk assessment and identify priority issues for Council and the community.
RES2 - Minimise the impact of urban heat	RES2.1 Review planning and development controls to assist with minimising urban heat including the use of green roofs and walls, and water sensitive urban design.
	RES2.2 Encourage and promote green infrastructure such as green roofs and walls and water sensitive urban design.
RES3 - Deliver climate mitigation and adaptation initiatives	RES3.1 Develop and implement a climate mitigation and adaptation plan for Council and the community.
	RES3.2 Develop a risk and resilience action plan, addressing priority shocks and stresses identified in Resilient Sydney - A Strategy for City Resilience.
RES4 - Build resilience to climate and natural disasters	RES4.1 Develop a Community Resilience Plan and incorporate into Council's Disaster Management Plan.

How will we measure our success?

By 2024:

- Risk/adaptation strategies implemented for 100% of the LGA's extreme and high risks.
- 80% of residents believe they have the information and resources needed to prepare, respond and recover from adverse events.
- 15% reduction in Camden community emissions.

8.4 Building Sustainable Communities

Camden residents value the character and uniqueness of the region – a country town feel, lifestyle and rural aspect. However, the environment of Camden is changing as it continues to grow and develop and it's important that we work with our communities and other important local partners to build knowledge and capacity around key sustainability issues.

At the same time Camden is becoming more culturally diverse. This presents an opportunity for Council to bring the community together and build a shared knowledge base that is inclusive and built on shared values.

With the significant changes also planned to take place within the local government area it's important that Council acts as an advocate around important sustainability issues to ensure their consideration in important policy and planning decisions that affect Camden.

This theme includes the following objectives:

- Improve sustainability awareness, knowledge and capacity in our communities;
- Develop partnerships and work collaboratively with local stakeholders and organisations; and
- Advocate for sustainability issues affecting Camden.

Goals:

- Communities are healthy, resilient and socially connected; and
- Communities understand and take action on sustainability issues.



Electricity use
accounts for
(53.7%)
of all Camden
emissions



Transport produces
(32.7%)
of all Camden
emissions



Waste disposal generates
(9.6%)
of all Camden
emissions

(48.4%)

of all Camden LGA
waste is recycled

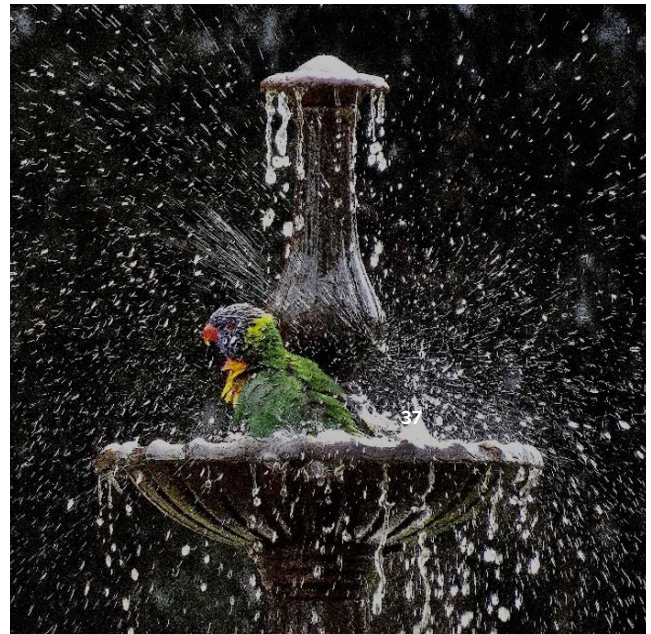


What have we already done?

Council has a long-term partnership with Wollondilly Shire and Campbelltown City Councils to deliver engaging events for the community, including the annual Threatened Species Art and Writing Competition and the Macarthur Nature Photography Competition.

These collaborative projects are designed to engage the community with the local environment as well as increase knowledge and awareness of local environmental issues.

As part of these events, educational walk and talks are conducted in the local environment, with both events culminating in a celebration of all entries and the winners of the competitions. Winners works are showcased at public spaces including Narellan Town Centre to raise the profile of the programs and encourage broader participation, with last year's winner photographs profiled in the Birds of Camden calendar.



Council delivers coordinated education programs including pre-school and school activities, workshops, school holiday activities, builder's breakfast events and participation in events and activities to promote the benefits of sustainability to the community.

Council also provides funding support to the not-for-profit Macarthur Centre for Sustainable Living to deliver important education and engagement activities around a range of sustainability issues, through workshops, playgroups, school visits and attendance at community events.

Camden Town Farm is a historic 52-hectare dairy farm that is managed as a working farm by a Council Community Management Committee. The Farm provides unique agricultural insights to the local community, with access provided by a walking path throughout the site.

The Camden Community Gardens, located at Camden Town Farm provides a place to bring gardeners together to learn and share while growing great local produce.

Working with our partners is also important. Camden is fortunate to have the The Royal Botanic Gardens Mount Annan within our Local Government Area and works collaboratively to

deliver events including Science in the Wild, Earth Hour celebrations and community events.

A number of projects are also underway including development of an Advocacy Strategy which will include consideration of sustainability issues affecting the local community. Preparation of a guide for local landholders with important remnant bushland is also underway to provide information and advice on management as well as available resources and support for conservation.



Objective	Action
COM1 - Improve sustainability awareness, knowledge and capacity in our communities	COM1.1 Develop and deliver an education and engagement program for the community to raise awareness on ways to reduce energy, water and emissions and on the importance of water quality.
	COM1.2 Develop and implement an education and engagement program for builders, developers and the broader community to encourage sustainable homes that are designed and built for Camden's climate.
	COM1.3 Deliver a community education program to build awareness and understanding of climate issues including urban heat, climate mitigation and adaptation and emergency responses.
	COM1.4 Investigate a community garden and urban food policy to encourage local food production.
	COM1.5 Implement the Waste Education Strategy.
	COM1.6 Develop programs to better educate residents about reducing food waste.
	COM1.7 Investigate and implement community vehicle emission reduction initiatives such as electric vehicle fast charging stations.
COM2 - Develop partnerships and work collaboratively with local stakeholders and organisations	COM2.1 Continue to invest in, implement and expand where appropriate, existing partnerships and programs with local and regional groups including the Macarthur Centre for Sustainable Living, Bushcare groups and Camden Town Farm and Community Garden.
	COM2.2 Look to establish new partnerships and programs with local and regional stakeholder groups.
	COM2.3 Develop strong relationships with neighbouring councils and look for opportunities to collaborate on regional sustainability initiatives and programs.
COM3 - Advocate for sustainability issues affecting Camden	COM3.1 Include relevant sustainability issues in Council's Advocacy Strategy, including key public transport initiatives, Air Quality and Noise.
	COM3.2 Work with stakeholders to advocate for a review of the Building and Sustainability Index (BASIX) and the sustainability of the built form outcomes within the exempt and complying development codes.
	COM3.3 Advocate to ensure minimal air quality and noise impacts for Camden relating to the Airport and other related development.

How will we measure our success?

By 2024:

- 5% reduction in residential food waste to landfill; and
- 80% of workshop attendees plan to take action to live more sustainably.

8.5 Leading by Example

Council has an important leadership role in the local community. What we do and how we behave has the potential to demonstrate and drive widespread positive environmental transformational changes.

Measures to improve resource efficiency, trial innovative technologies and to drive the uptake of renewable energy are needed. Council can also demonstrate sustainable management through improvements to the delivery of our services and ensuring that new facilities apply best practice sustainability standards.

This theme includes the following objectives:

- Reduce energy, water, waste and emissions from Council operations;
- Increase use of renewable energy and alternative water supplies;
- Support sustainable procurement;
- Improve the sustainability of Council events; and
- Apply best practice sustainability standards for Council projects.

Council used
43,432
gigajoules of energy in
2018-19, an increase
of 2.6% from the
previous year

Council was responsible
for emissions of
7,299
tonnes of carbon dioxide equivalent,
a decrease of 2%
from the previous year

Council used
144,731 kilolitres
of potable water in 2018-19,
down 6.5%
from the previous year

Goals:

- Energy and water efficiency improvements at Council facilities;
- Increase in the amount of renewable energy generated;
- Amount of corporate waste to landfill is reduced;
- Council energy and water consumption and waste generation is monitored and reported;
- Sustainability considerations included in all tenders; and
- Sustainability of Council events is improved.

What have we already done?

Green Team – One Small Change

Council's Green Team is made up of a team of passionate and dedicated staff from across the organisation. Established in 2017, the Green Team has worked together to implement a range of sustainability focussed initiatives to educate, inspire and encourage staff. This has included a 'One Small Change' event where staff were challenged to think about how their everyday actions can add up to make an impact, pledging to make one small change.

The Team has also been responsible for a number of other projects, often with both environmental and financial benefits for Council, including changing printer settings to reduce the use of coloured ink and toner, and reducing waste to landfill through a waste audit and implementation of a soft plastics collection.

Council is a participant in the Sustainable Advantage program to drive improvements to sustainability across the organisation. In 2019, Council achieved Bronze status and is now working towards silver.

A range of energy and water efficiency projects have been undertaken including the installation of energy and water efficient fixtures and fittings, and rooftop solar systems. We also use recycled water to irrigate two of our playing fields, and harvest rainwater and stormwater to irrigate others.

Council recognises that we can make a big impact by improving our procurement and supply chain. We have been working with suppliers to minimise waste and incorporate recycled content and also participate in the Sustainable Choice program to monitor Council's progress in this area.

A number of projects are also underway including the development of minimum sustainability standards for all existing and new facilities through the Camden Public Buildings Design Manual and the Camden Open Space Design Manual. We have also been able to include sustainable options in Council's fleet including hybrid, electric and low emission vehicles.

Key Issue	Action
LEA1 - Reduce energy, water, waste and emissions from Council operations	LEA1.1 Benchmark energy, waste, water and emissions of council operations and set and report against annual targets.
	LEA1.2 Conduct energy and water audits on high use facilities and develop and implement an energy and water efficiency plan.
	LEA1.3 Investigate options to reduce emissions from Council's fleet through use of low emission technologies including electric vehicles.
	LEA1.4 Conduct operational waste audits and identify and implement a waste reduction plan.
	LEA1.5 Participate in a regional procurement approach for future waste disposal and processing solutions.
LEA2 - Develop partnerships and work collaboratively with local stakeholders and organisations	LEA2.1 Develop a renewable energy target and develop and implement a renewable energy action plan.
	LEA2.2 Increase stormwater and rainwater harvesting and reuse at Council sites and investigate the use of recycled water.
LEA3 - Support sustainable procurement	LEA3.1 Improve and promote procurement processes and tools to support staff to engage in sustainable procurement.
	LEA3.2 Include sustainability considerations in all procurement decisions, including sustainability weighted criteria for all tenders.
	LEA3.3 Engage with industry and suppliers to increase the uptake of recycled content, for example, in buildings and infrastructure.
	LEA3.4 Strongly encourage the inclusion of recycled content in purchases.
LEA4 - Improve the sustainability of Council events	LEA4.1 Review current event strategy, policy and procedures to ensure best practice sustainability principles are incorporated.
	LEA4.2 Develop sustainable events guide for both internal and external stakeholders.
LEA5 - Apply best practice sustainability standards for Council projects	LEA5.1 Investigate the use of the Green Star Rating Tool for new buildings.
	LEA5.2 Incorporate sustainability outcomes in the design and construction of the Oran Park Leisure Centre
	LEA5.3 All new buildings to meet minimum sustainability requirements outlined in the Camden Buildings Public Design Manual.
	LEA5.4 Redevelopment of the Works Depot to incorporate sustainable design and management

How will we measure our success?

By 2024:

- 20% reduction in Council energy use per capita;
- 20% increase in renewable energy generated;
- 20% reduction in potable water use per capita at Council facilities;
- Measure and report all Council waste; and
- Sustainability criteria included in all tenders.



9. Implementation and Monitoring

Implementation

The actions identified in the Sustainability Strategy will be implemented over the next four years. Each action has identified a lead branch, priority and timeframe in which it will be implemented.

Green Team

The Green Team are a group of dedicated staff from across the organisation who are working together to improve Council's sustainability performance. The Green Team will assist with building the capacity within the organisation to embed sustainability throughout all areas of Council.

Stakeholders

Implementation of the actions will require support and involvement from a range of stakeholders including residents, businesses, industry, conservation and not for profit organisations and other government agencies.

Resourcing

For Council to be successful in achieving the goals identified in this strategy, financial and staff resources will need to be allocated to implement the actions. Some of these actions already have budgets allocated or are funded in the Delivery Program. Additional funding will be sought through external grants or through the preparation of a business case to justify the need for funding as part of future Council budgetary cycles.

Monitoring and reporting

Council will monitor, review and report on the success measures outlined to ensure we are on target to reach the goals identified in each theme. Council will use the existing Integrated Planning and Reporting (IP&R) framework under the Local Government Act 1993 for the purpose of monitoring implementation of the Sustainability Strategy.

Council will commence a full review of the Sustainability Strategy at the end of the 2023/24 in order to prepare a revised Sustainability Strategy that is aligned with any changes in the goals and the latest information available.

Appendix

The actions contained within the Sustainability Strategy demonstrate Council's commitment to take action towards sustainability. The following action plans provide further detail around each action, including the timeframe for implementation and the lead branch that will be driving the action. Each action has also been mapped against the Community Strategic Plan 2017 and the Local Strategic Planning Statement 2020 to demonstrate alignment with these key planning documents.

In addition, each action has also been mapped against the Sustainable Development Goals (SDGs) which were adopted as the 2030 Agenda for sustainable Development in September 2015 by 193 United Nations member states and ratified by the Australian Government. These action plans contribute to 11 of the 17 SDGs.

Creating Sustainable Urban Environments

Objective	Action
URB1 - Embed sustainability into urban planning and design	URB1.1 Undertake a review of planning controls to ensure sustainability principles are embedded and local climate is considered.
	URB1.2 Develop a Sustainable Homes program, identifying energy and water efficiency retrofit opportunities as well as Camden specific sustainability information for new and existing homes.
	URB1.3 Ensure new release areas have adequate space for street trees.
	URB1.4 Increase the use of water sensitive urban design on public land.
	URB1.5 Prepare a water sensitive urban design policy.
	URB1.6 Create a water efficient landscape standard for use in public and private development.
	URB1.7 Work with water service providers to design and deliver infrastructure, water servicing and development approaches that best contribute to local and regional water supply and water cycle management.
	URB1.8 Review planning and development controls for car share, electric vehicle and active transport facilities and connections across the Camden LGA.

Sustainable
Development
Goals

Lead Branch	Priority	Timeframe	CSP Alignment	LSPS Alignment
Strategic Planning	High	Year 2	1.1.2	94 99 110 122 126
Open Space & Sustainability	High	Year 1	2.1.10	111
Assets & Design Services	High	Year 1	1.1.2	85
Assets & Design Services	High	Ongoing	2.1.3	92
Assets & Design Services	High	Year 1	2.1.3	
Assets & Design Services	High	Year 2	2.1.3	
Assets & Design Services	High	Ongoing	2.1.3	91
Strategic Planning	High	Ongoing	4.2.1	112

Cont...



Creating Sustainable Urban Environments (Cont)

Objective	Action
URB2 - Deliver sustainable precincts	URB2.1 Investigate planning and development controls and the use of incentives to encourage improvements in water and energy efficiency and the use of renewable energy in growth precincts.
	URB2.2 Work with developers and Sydney Water to encourage the delivery of recycled water systems in new developments.
	URB2.3 Advocate for the development of low carbon precincts within the South West Growth Area, with Leppington Town Centre as a pilot precinct.
	URB2.4 Ensure Green and Blue Grid principles are considered in the master planning and design of new precincts.
URB3 - Maximise connectivity and accessibility to the River	URB3.1 Identify and implement projects to enhance the Green and Blue Grid.
	URB3.2 Increase physical and visual connection to waterways and green spaces including linking cycling and walking network to the green corridor.
	URB3.3 Investigate opportunities to activate and enhance the Nepean River.
URB4 - Increase urban tree canopy coverage	URB4.1 Identify opportunities to implement improved canopy cover on public and private land.
	URB4.2 Develop a street and public tree masterplan to inform LGA-wide planting program.

Sustainable
Development
Goals

Lead Branch	Priority	Timeframe	CSP Alignment	LSPS Alignment
Strategic Planning	High	Ongoing	2.1.10	
Strategic Planning	High	Ongoing	2.1.10	
Strategic Planning	High	Ongoing	2.1.10	116
Strategic Planning	High	Ongoing	2.1.7	
All Council	High	Ongoing	2.1.7 2.1.8	82
Open Space & Sustainability	High	Ongoing	2.1.8	83
Sport & Community Facilities	High	Ongoing	2.1.8	96
Open Space & Sustainability	High	Ongoing		85
Open Space & Sustainability	High	Year 2		86

Protecting Our Natural Environments

Objective	Action
NAT1 - Improve biodiversity management	NAT1.1 Advocate for the retention of remnant vegetation in the master planning of new urban areas.
	NAT1.2 Develop management plans for areas of high biodiversity value.
	NAT1.3 Develop a fauna pest management strategy to address risks to biodiversity.
	NAT1.4 Maintain, improve and create new habitats for threatened flora and fauna species identified in bushland and waterways.
	NAT1.5 Increase use of native flora in urban areas to extend habitat connectivity.
	NAT1.6 Monitor the extent and condition of Council owned and managed bushland areas and identify additional funding opportunities to deliver a high-quality conservation and restoration program.
	NAT1.7 Investigate establishing a nursery facility to propagate and grow local native plants for restoration and community projects.
	NAT1.8 Investigate opportunities to expand the Bushcare program.

Sustainable
Development
Goals

Lead Branch	Priority	Timeframe	CSP Alignment	LSPS Alignment
Strategic Planning	High	Ongoing	2.1.2	84
Open Space & Sustainability	High	Year 1	2.1.2	106
Open Space & Sustainability	Medium	Year 2	2.1.2	107
Open Space & Sustainability	High	Ongoing	2.1.2	95
All Council	High	Year 1	2.1.2	
Open Space & Sustainability	High	Year 1	2.1.2	104
Open Space & Sustainability	High	Year 1	2.1.2	
Open Space & Sustainability	High	Year 1	2.1.2	109

Cont...

Protecting Our Natural Environments (Cont)

Objective	Action
NAT2 -Improve waterway health	NAT2.1 Undertake a review of Camden's waterways and riparian areas and develop and implement a program of prioritised waterway erosion control and rehabilitation projects.
	NAT2.2 Support the State Government in developing a strategy to restore and protect South Creek.
	NAT2.3 Develop and publish a waterway health report card for priority waterways within the LGA.
	NAT2.4 Develop and implement a Stormwater Improvement Plan identifying projects to improve water quality, for example, through water sensitive urban design, water treatment devices.
	NAT2.5 Undertake a program of compliance activities to reduce stormwater pollution from building sites.

Sustainable
Development
Goals

Lead Branch	Priority	Timeframe	CSP Alignment	LSPS Alignment
Assets & Design Services	Medium	Year 3	2.1.3	89
Assets & Design Services/ Strategic Planning	High	Ongoing	2.1.3	88
Open Space & Sustainability	High	Year 2	2.1.3	
Assets & Design Services	Medium	Year 3	2.1.3	98
Environment & Regulatory Services	High	Ongoing	2.1.3	

Improving Resilience to Climate Change

Objective	Action
RES1 - Understand climate risks for Camden LGA	RES1.1 Mitigate the urban heat island effect and reduce vulnerability to extreme heat.
	RES1.2 Work with Western Sydney District councils to develop standardised engineering specifications to address liveability and urban heat.
	RES1.3 Undertake floodplain risk management plans for Nepean River and South Creek catchments incorporating climate change projections.
	RES1.4 Undertake a climate risk assessment and identify priority issues for Council and the community.
RES2 - Minimise the impact of urban heat	RES2.1 Review planning and development controls to assist with minimising urban heat including the use of green roofs and walls, and water sensitive urban design.
	RES2.2 Encourage and promote green infrastructure such as green roofs and walls and water sensitive urban design.
RES3 - Deliver climate mitigation and adaptation initiatives	RES3.1 Develop and implement a climate mitigation and adaptation plan for Council and the community.
	RES3.2 Develop a risk and resilience action plan, addressing priority shocks and stresses identified in Resilient Sydney - A Strategy for City Resilience.
RES4 - Build resilience to climate and natural disasters	RES3.3 Develop a Community Resilience Plan and incorporate into Council's Disaster Management Plan.



Sustainable Development Goals



Lead Branch	Priority	Timeframe	CSP Alignment	LSPS Alignment
All Council	High	Ongoing	1.1.2	
Assets & Design Services	High	Year 1	1.1.1	
Assets & Design Services	High	Year 1	1.1.2	126
Open Space & Sustainability	High	Year 2		124
Strategic Planning	High	Year 2 / Ongoing	1.1.2	
Open Space & Sustainability	Medium	Ongoing		111
Open Space & Sustainability	High	Year 3		124
Open Space & Sustainability	High	Year 3	*	
Open Space & Sustainability	Medium	Year 4	5.1.1	

*Denotes an action that will be considered in Council's next revision of the Community Strategic Plan.
This action will be reported through Council's Annual Reporting process.



Building Sustainable Communities

Objective	Action
COM1 - Improve sustainability awareness, knowledge and capacity in our communities	COM1.1 Develop and deliver an education and engagement program for the community to raise awareness on ways to reduce energy, water and emissions and on the importance of water quality.
	COM1.2 Develop and implement an education and engagement program for builders, developers and the broader community to encourage sustainable homes that are designed and built for Camden's climate.
	COM1.3 Deliver a community education program to build awareness and understanding of climate issues including urban heat, climate mitigation and adaptation and emergency responses.
	COM1.4 Investigate a community garden policy to encourage local food production.
	COM1.5 Implement the Waste Education Strategy.
	COM1.6 Develop programs to better educate residents about reducing food waste.
	COM1.7 Investigate and implement community vehicle emission reduction initiatives such as electric vehicle fast charging stations.



Sustainable Development Goals



Lead Branch	Priority	Timeframe	CSP Alignment	LSPS Alignment
Open Space & Sustainability	High	Year 1	2.1.3 2.1.4 2.1.5 2.1.10	100 115
Open Space & Sustainability	High	Year 1	2.1.10	111
Open Space & Sustainability	High	Year 2	5.1.1	103
Sport & Community Services	Medium	Year 2	5.1.1	125
Waste & City Presentation	Medium	Year 3	2.1.4	118
Waste & City Presentation	Medium	Year 2	2.1.4	115
Traffic, Depot & Building Services	Medium	Year 2	4.2.1	112

Cont...



Building Sustainable Communities (Cont)

Objective	Action
COM2 - Develop partnerships and work collaboratively with local stakeholders and organisations	COM2.1 Continue to invest in, implement and expand where appropriate, existing partnerships and programs with local and regional groups including the Macarthur Centre for Sustainable Living, Bushcare groups and Camden Town Farm and Community Garden.
	COM2.2 Look to establish new partnerships and programs with local and regional stakeholder groups.
	COM2.3 Develop strong relationships with neighbouring councils and look for opportunities to collaborate on regional sustainability initiatives and programs.
COM3 - Advocate for sustainability issues affecting Camden	COM3.1 Include relevant sustainability issues in Council's Advocacy Strategy, including key public transport initiatives, air quality and noise.
	COM3.2 Work with stakeholders to advocate for a review of the Building and Sustainability Index (BASIX) and the sustainability of the built form outcomes within the Exempt and Complying Development codes.
	COM3.3 Advocate to ensure minimal air quality and noise impacts for Camden relating to the Airport and other related development.



Sustainable Development Goals



Lead Branch	Priority	Timeframe	CSP Alignment	LSPS Alignment
All Council	High	Ongoing	6.2.3	103 123 127
All Council	High	Ongoing	6.2.3	
All Council	High	Ongoing	6.2.3	97
Public Affairs	High	Ongoing		2, 11, 19 and 21
Strategic Planning	High	Year 1	2.1.10	113
Strategic Planning	High	Ongoing	2.1.5 2.1.6	2, 11, 19 and 21



Leading by Example

Objective	Action
LEA1 - Reduce energy, water, waste and emissions from Council operations	LEA1.1 Benchmark energy, waste, water and emissions of council operations and set and report against annual targets.
	LEA1.2 Conduct energy and water audits on high use facilities and develop and implement an energy and water efficiency plan.
	LEA1.3 Investigate options to reduce emissions from Council's fleet through use of low emission technologies including electric vehicles.
	LEA1.4 Conduct operational waste audits and identify and implement a waste reduction plan.
	LEA1.5 Participate in a regional procurement approach for future waste disposal and processing solutions.
LEA2 - Increase use of renewable energy and alternative water supplies	LEA2.1 Develop a renewable energy target and develop and implement a renewable energy action plan.
	LEA2.2 Increase stormwater and rainwater harvesting and reuse at Council sites and investigate the use of recycled water.



Sustainable Development Goals



Lead Branch	Priority	Timeframe	CSP Alignment	LSPS Alignment
Open Space & Sustainability	High	Year 1	2.1.10	114
Open Space & Sustainability / Traffic, Depot & Building Services	High	Year 1	2.1.10	114
Traffic, Depot & Building Services	Low	Year 3	2.1.10	
Waste & City Presentation	Medium	Year 1	2.1.4	
Waste & City Presentation	High	Year 2	2.1.4	120
Open Space & Sustainability	High	Year 2	2.1.10	114
Assets & Design Services / Major Projects	Medium	Ongoing	2.1.10	

Cont...



Leading by Example (Cont)

Objective	Action
LEA3- Support sustainable procurement	LEA3.1 Improve and promote procurement processes and tools to support staff to engage in sustainable procurement.
	LEA3.2 Include sustainability considerations in all procurement decisions, including sustainability weighted criteria for all tenders.
	LEA3.3 Engage with industry and suppliers to increase the uptake of recycled content, for example, in buildings and infrastructure.
	LEA3.4 Strongly encourage the inclusion of recycled content in purchases.
LEA4 - Improve the sustainability of Council events	LEA4.1 Review current event strategy, policy and procedures to ensure best practice sustainability principles are incorporated.
	LEA4.2 Develop sustainable events guide for both internal and external stakeholders.
LEA5 - Apply best practice sustainability standards for Council projects	LEA5.1 Investigate the use of the Green Star Rating Tool for new buildings.
	LEA5.2 Incorporate sustainability outcomes in the design and construction of the Oran Park Leisure Centres.
	LEA5.3 All new buildings to meet minimum sustainability requirements outlined in the Camden Buildings Public Design Manual.
	LEA5.4 Redevelopment of the Works Depot to incorporate sustainable design and management



Sustainable Development Goals



Lead Branch	Priority	Timeframe	CSP Alignment	LSPS Alignment
Financial Services	High	Ongoing	6.1.1	
Financial Services	High	Year 2	6.1.1	
All Council	Medium	Ongoing	6.1.1	
Procurement	Medium	Year 3	6.1.1	
Public Affairs	High	Year 1	6.1.1	
Public Affairs	High	Year 2	6.1.1	
Major Projects	High	Year 4	2.1.10	
Major Projects	High	Year 4	2.1.10	
Major Projects	High	Ongoing	2.1.10	
Civil Construction & Maintenance	High	Year 2	2.1.10	



For further information contact :

✉ Camden Council
70 Central Avenue
Oran Park NSW 2570

☎ 4654 7777

✉ mail@camden.nsw.gov.au